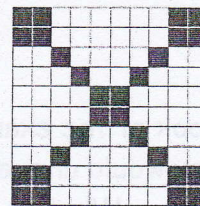


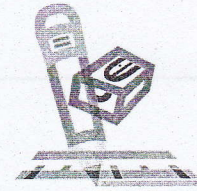
Name _____ Date _____

Decimal Designs Table



- Look at the example in the table below. Read the following questions and discuss how you would answer them with your partner.
 - What do you notice about how "1 out of 10" is written in fraction form?
 - What do you notice about how "1 out of 10" is written in decimal number form?
 - How are they alike? How are they different?
- Complete the table below. Fill in the last three rows of the table from the "Decimals Designs" student recording sheet.

Input	Output	
	Fraction	Decimal
1 out of 10	$\frac{1}{10}$	0.1
2 out of 10		
4 out of 10		
7 out of 10		
10 out of 10		
___ out of 10		
___ out of 10		
___ out of 10		

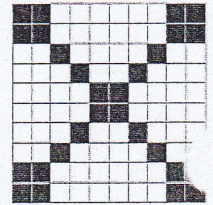


Decimal Designs

Table, Page 2

3. Look at the example in the table below. Read the following questions and discuss how you would answer them with your partner.
- What do you notice about how "29 out of 100" is written in fraction form?
 - What do you notice about how "29 out of 100" is written in decimal number form?
 - How are they alike? How are they different?
4. Complete the table below. Fill in the last three rows of the table from the "Decimals Designs" student recording sheet.

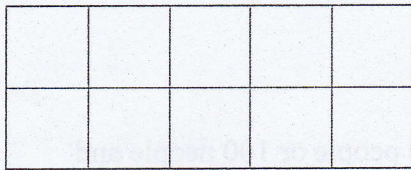
Input	Output	
	Fraction	Decimal
29 out of 100	$\frac{29}{100}$	0.29
44 out of 100		
62 out of 100		
75 out of 100		
100 out of 100		
___ out of 100		
___ out of 100		
___ out of 100		



Name _____ Date _____

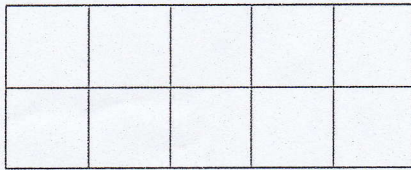
Decimal Designs

Create tenths and hundredths designs and label them accurately.



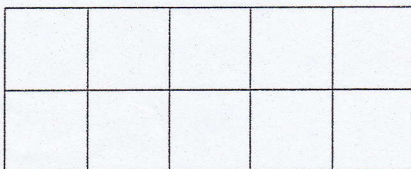
___ shaded boxes out of 10

Fraction _____ Decimal Number _____



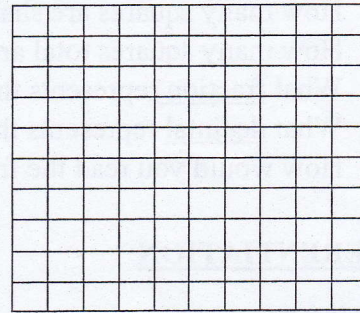
___ shaded boxes out of 10

Fraction _____ Decimal Number _____



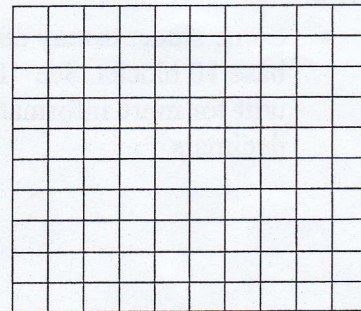
___ shaded boxes out of 10

Fraction _____ Decimal Number _____



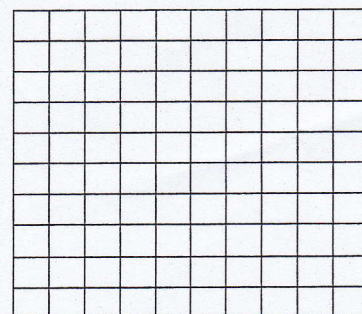
___ shaded boxes out of 100

Fraction _____ Decimal _____



___ shaded boxes out of 100

Fraction _____ Decimal _____



___ shaded boxes out of 100

Fraction _____ Decimal _____